


Community Choice Aggregation of Electricity: An information session

Energy and Climate Action Committee, Shutesbury
November 4, 2025

Enabling policy environment



Energy Research & Social Science
Volume 86, April 2022, 102393



Original research article

Straight out of Cape Cod: The origin of community choice aggregation and its spread to other states

David Hsu 

[Show more](#) 

[+](#) Add to Mendeley [🔗](#) Share [🗣️](#) Cite

<https://doi.org/10.1016/j.erss.2021.102393> [Get rights and content](#)

Under a Creative Commons [license](#)  Open access

<https://www.sciencedirect.com/science/article/pii/S2214629621004783>

Massachusetts

General Laws >> Part I >> Title XXII
>> Chapter 164

Section 134: Load aggregation programs

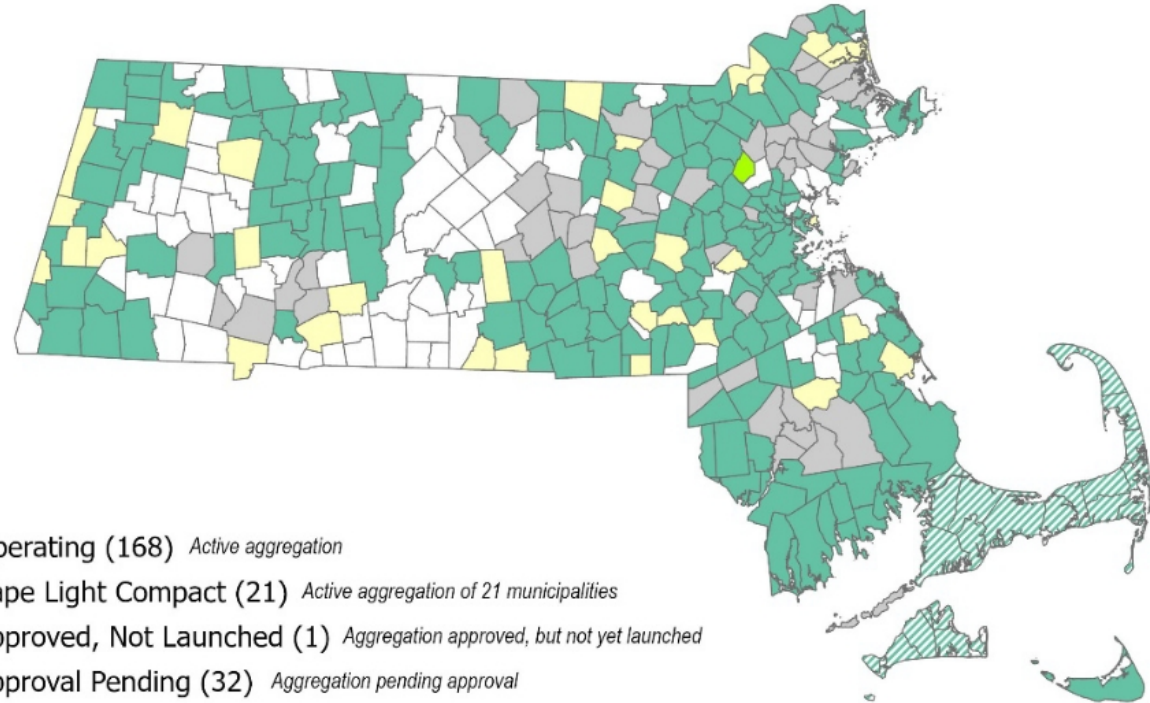
“I appreciate when people outside of academia read my work and find it relevant!” - David Hsu, Professor, MIT



2024 Massachusetts Municipal Aggregation Status

169 municipal aggregations operating in 2024
(including Cape Light Compact)

Most people in
Massachusetts get
their electricity
through an
aggregation.



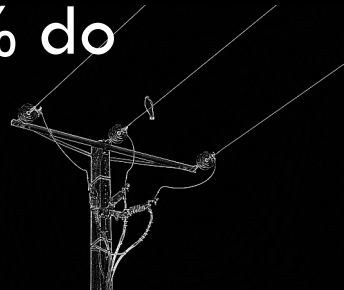
- Operating (168) *Active aggregation*
- Cape Light Compact (21) *Active aggregation of 21 municipalities*
- Approved, Not Launched (1) *Aggregation approved, but not yet launched*
- Approval Pending (32) *Aggregation pending approval*
- Municipal Light Plant (49) *Not eligible for aggregation*
- None (80) *No approved aggregation*

0 10 20 40 Miles



What does community choice aggregation of electricity mean **for towns and households?**

- Community Choice Aggregation (CCA) enables city and county governments to procure electricity from a supplier other than its utility provider.
- Town can negotiate more stable and potentially lower electricity rates than the standard utilities offer.
- Households can opt out at any time (nationally, 3-5% do this).



What does community choice aggregation of electricity mean **for the environment?**

Year	MA Renewable Energy Requirement
2021	49.3%
2022	51.3%
2023	59.2%
2024	62.3%
2025	63.1%
2026	69.1%
2027	75.4%
2028	80.8%
2029	86.8%

- Lower electricity costs make it easier for households to electrify and switch away from fossil fuels.
- Additional Renewable Energy Certificate (REC) purchases should, in theory, stimulate additional renewable energy capacity.

Values in red are estimates



What are people saying about CCA where it's up and running?

Aaron Falbel, Vice-Chair, Sunderland Energy Committee

"It's gone very well. Because we were able to lock in a low rate, every option Sunderland provides now costs less than Eversource's current default."

Joyce Palmer-Fortune, Whately Select Board

"Residents support increasing the use of local renewable energy and taking action to reduce the impact of climate change. But knowing that the program offers a chance to save residents money at the same time makes this a no-brainer."

Portia Weiskel, Leverett Energy Committee

"Leverett spent a long time putting it together but people like it. The objective was to find green energy that would cost less."

What are people saying about Colonial Power Group?

“Simply put, Colonial Power has some of the best customer service in any industry right now. Denise, Mark, the entire team is excellent. They walk you through the entire step-by-step and do a phenomenal job assisting communities. We have had them for seven years and they're A+.”

"Our experience with Colonial has been great."

"[We] met directly with many companies. Colonial is easy to deal with."

"[We were] having lots of trouble with brokers and then Colonial came along and were good listeners. They did a pretty good job of communicating."

Shutesbury's new supply rates

**Current National
Grid Supply Rate**
\$0.15484 / kWh



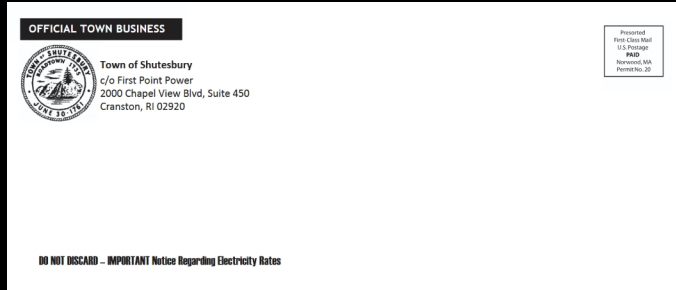
**New Standard
(default)**
\$0.14164 / kWh
**Meets MA
Requirements for
renewable
electricity**



New Optional
\$0.16816 / kWh
**100% MA Class I
RECs**

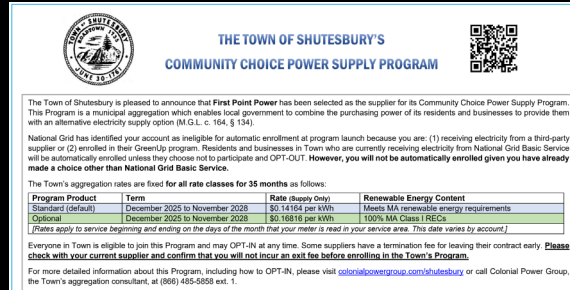


Three kinds of households in Shutesbury



You're a National Grid Basic Service Customer and will be automatically enrolled in the new low-cost default. Opt-out to stay with National Grid.

Supply Services
SUPPLIER National Grid

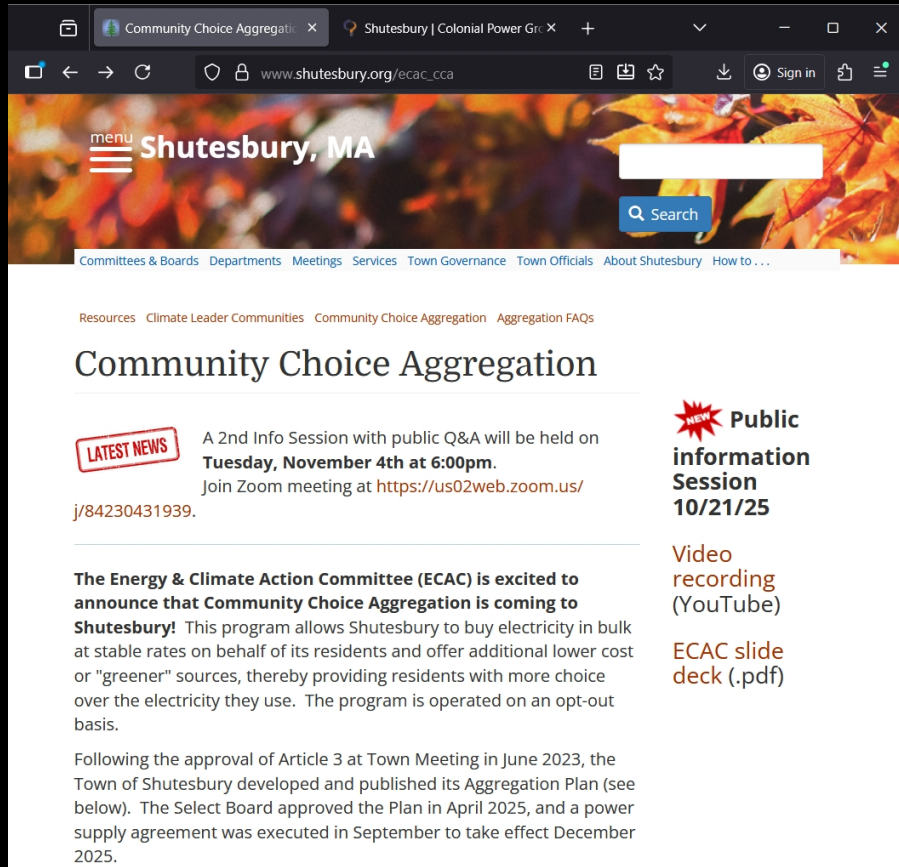


You're contracted with a third-party supplier (e.g. Green Energy Consumers Alliance, CleanChoice Energy) and were not eligible at the time of the mailing. You will NOT be automatically enrolled. Check contract conditions.



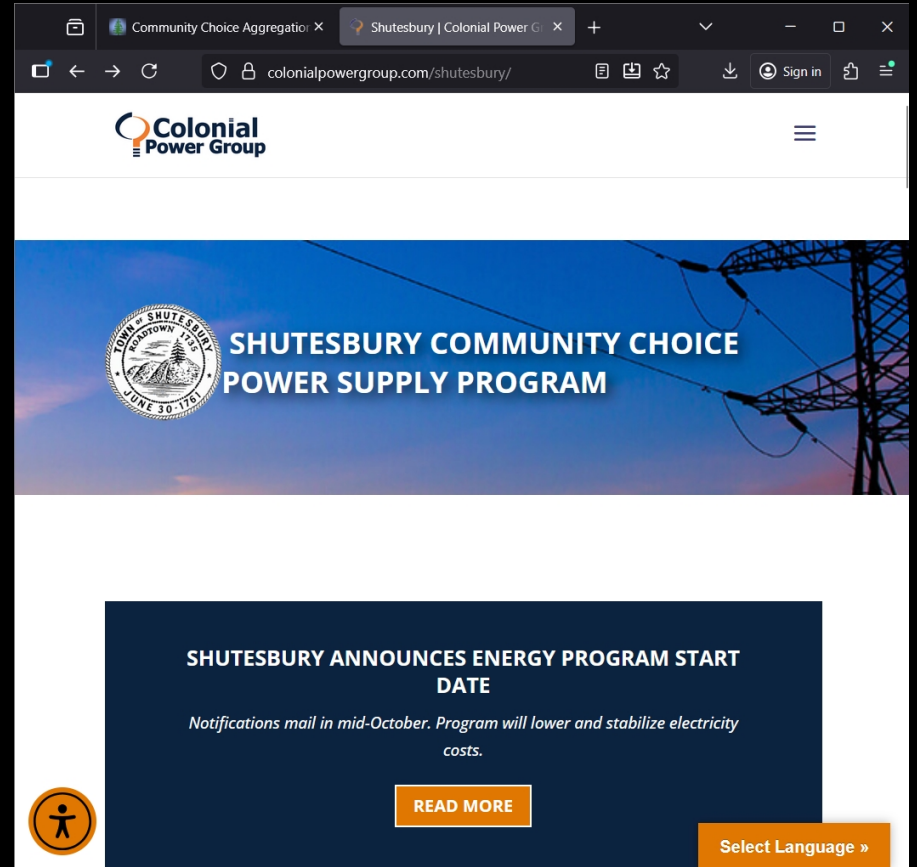
You're one of the small number of Eversource customers in Shutesbury. From a cost perspective, Eversource customers are better off staying with Eversource for the time being. But stay tuned!

Even more information



The screenshot shows the website www.shutesbury.org/ecac_cca. The page features a navigation menu with items like 'Committees & Boards', 'Departments', 'Meetings', 'Services', 'Town Governance', 'Town Officials', 'About Shutesbury', and 'How to...'. Below the menu, there are links for 'Resources', 'Climate Leader Communities', 'Community Choice Aggregation', and 'Aggregation FAQs'. The main heading is 'Community Choice Aggregation'. A 'LATEST NEWS' box highlights a public Q&A session on Tuesday, November 4th at 6:00pm, with a Zoom link. To the right, there are links for 'Public information Session 10/21/25', 'Video recording (YouTube)', and 'ECAC slide deck (.pdf)'. The main text states that the Energy & Climate Action Committee (ECAC) is excited to announce the program, which allows residents to buy electricity at stable rates with lower costs. It also mentions the approval of Article 3 at a town meeting in June 2023 and the execution of a power supply agreement in September 2025.

https://www.shutesbury.org/ecac_cca



The screenshot shows the website colonialpowergroup.com/shutesbury/. The page features the Colonial Power Group logo and a navigation menu. The main heading is 'SHUTESBURY COMMUNITY CHOICE POWER SUPPLY PROGRAM'. Below the heading, there is a section titled 'SHUTESBURY ANNOUNCES ENERGY PROGRAM START DATE' with the text 'Notifications mail in mid-October. Program will lower and stabilize electricity costs.' and a 'READ MORE' button. There is also a 'Select Language »' button in the bottom right corner.

<https://colonialpowergroup.com/shutesbury/>

REWORKING
AMERICA

*Heed
the cry...*



ELECTRIFY!